

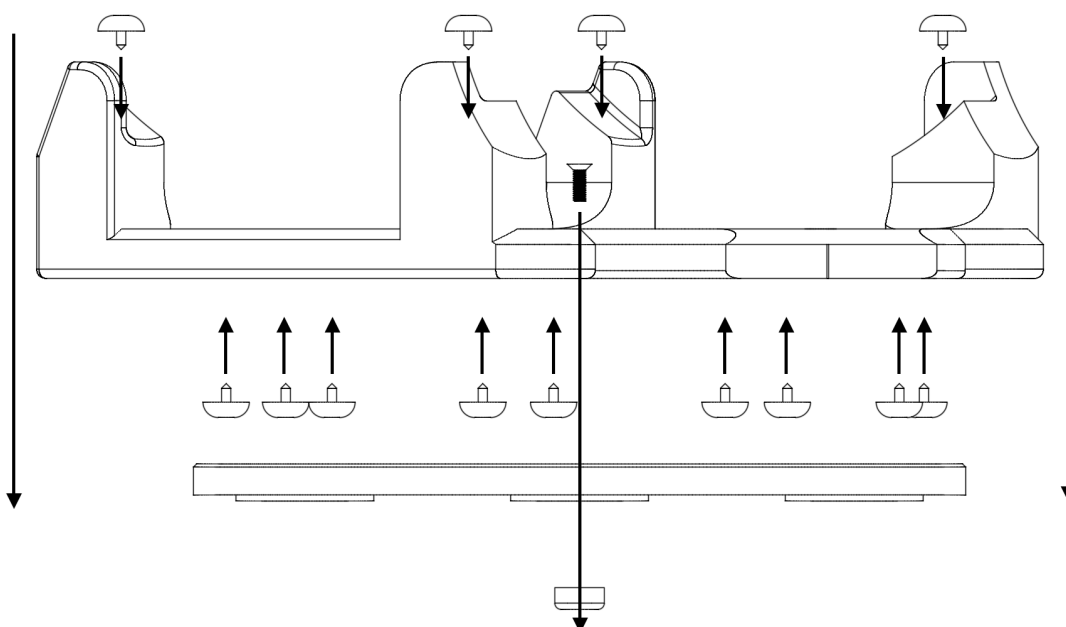
la3emedim.fr



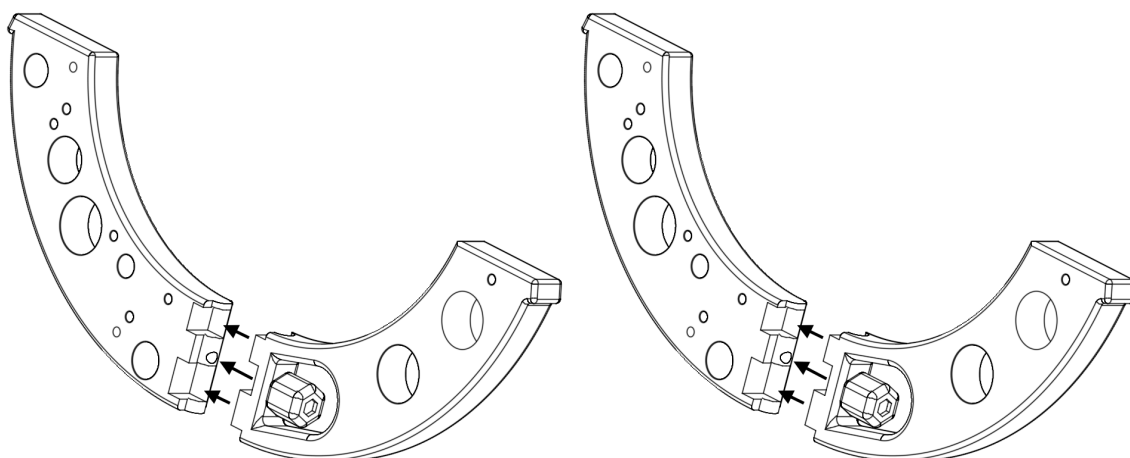
| SMALLEST MATERIALS LIST |  |         |
|-------------------------|--|---------|
| PIECES                  | MATERIAL   | NUMBER  |
| 3D FILAMENT             | PETG - ASA - ABS (NO PLA)                                    | 2000 gr |
|                         |  |         |
| FOCUSER                 | m4 nylon screw for ocular part                               | 1       |
|                         | m4x25 hexagonal screw pressure adjustment                    | 1       |
|                         | Insert M4 for pressure screw tube                            | 1       |
|                         | Insert m4 for pressure adjustment                            | 1       |
|                         | Insert m3 for focuser  | 3       |
|                         | Bearing 623zz  | 4       |
|                         | M3x16 screw for bearing                                      | 4       |
|                         | M3x18 nut bearing  | 4       |
|                         | 4 mm rolling axle  | 1       |
|                         | Aluminum plates of 10mm by 2mm                               | 3       |
| SECONDARY CAGE          | m4 insert  | 3       |
|                         | m4x35 hexagonal collimation screw                            | 3       |
|                         | m4x35 hexagonal screw for secondary cage and tube            | 4       |
| SECONDARY PLATE         | Magnets neodim 8*3mm   | 4       |
|                         | 30mm washer  | 1       |
|                         | M4x35 conical screw  | 1       |
|                         | Spring 0.7, 35mm, 10mm                                       | 1       |
|                         | M4 nut   | 1       |
|                         | 10mm washer  | 2       |
|                         | Double-sided adhesive tape, extra strong, red, 19 mm x 1.5 m | 1       |
|                         | 10mm washer  | 1       |
| ALUMINIUM TUBE          | tube 8mm x 5mm   | 8       |
|                         | M4 insert  | 4       |
|                         | M4x20 conical head screw with lock nut                       | 8       |
| PRIMARY CAGE            | M4x25 Screwn for tube  | 4       |
|                         | M4x25 Screw for half moon                                    | 4       |
|                         | M4 insert  | 8       |
| BARREL                  | M4 Hexagonal Screw   | 3       |
|                         | m4 inserts for collimation wheels                            | 3       |
|                         | m4 insert for lock miror                                     | 3       |
|                         | M4 Hexagonal Screw   | 3       |
| TOP ROCKER              | M4x15 screw  | 1       |
|                         | M4 lock nut  | 1       |
|                         | PTFE Round pad 1cm   | 13      |
|                         | Felt skate 1cm   | 4       |
| HALF MOON TUBE          | M4x25 hexagonal screw  | 2       |
|                         | M4 insert  | 2       |
| BOTTOM ROCKER           | NOTHING  |         |

**WARNING : Never point the Smallest telescope at the Sun — it's extremely dangerous for your eyes.**

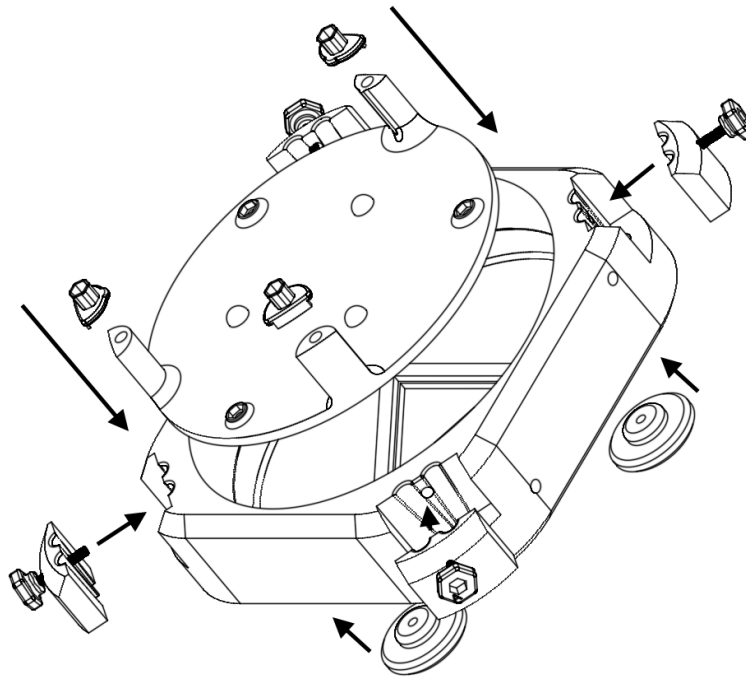
**ROCKER:**



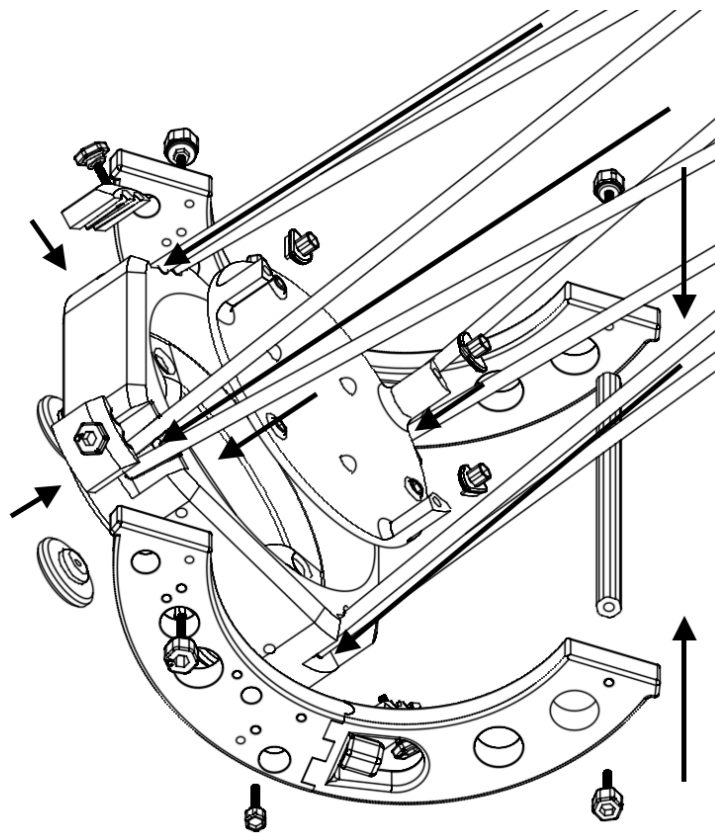
**HALF MOON:**



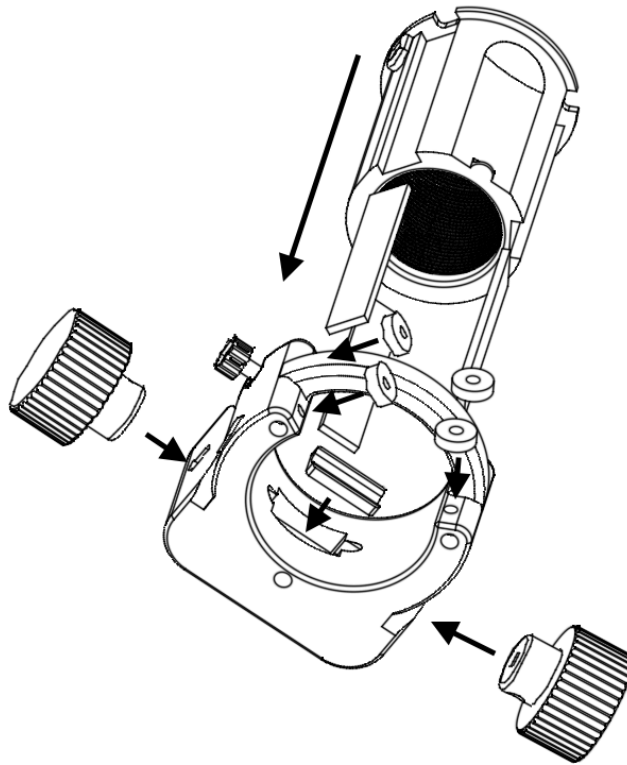
**PRIMARY CAGE:**



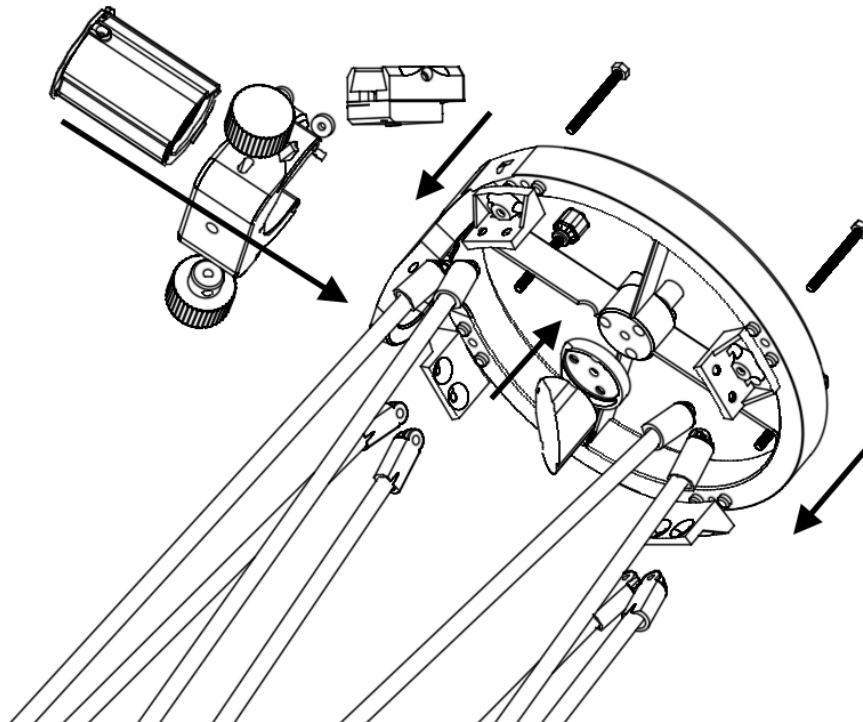
**ALUMINIUM TUBE, PRIMARY CAGE AND HALF MOON:**



**FOCUSER:**



**SECONDARY CAGE:**



SMALLEST:

1

